

City of SB Historical  
& Pioneer Society  
P.O. Box 875  
San Bernardino, CA 92402  
ADDRESS CORRECTION REQUESTED

Non-Profit Organization  
U.S. POSTAGE PAID  
Permit No. 1614  
San Bernardino, Calif.



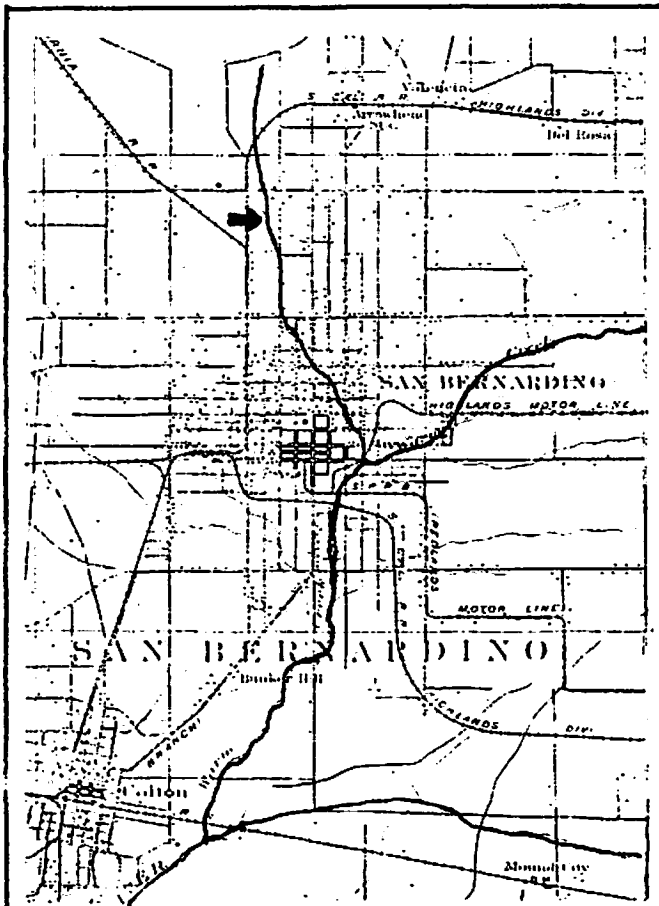
# ODYSSEY

Published quarterly by the City of San  
Bernardino Historical & Pioneer Society

VOLUME 4, NUMBER 3

JULY - AUGUST - SEPTEMBER, 1982

WHOLE NUMBER 21



Town Creek (arrow) flows southward to join  
Warm Creek at 3rd & Mt. View. Both then join  
the Santa Ana River near the city of Colton.

## TOWN CREEK

By Arda M. Haenszel

**N**OT many residents of San Bernardino remember Town Creek. Even old-timers have all but forgotten it, because it has almost completely disappeared, and, as the saying goes, "out of sight, out of mind."

Until the early 1870's, however, when residents began to drill wells on their own lots to tap the artesian basin, Town Creek was a feature of major importance. In the 1850's it furnished the principal water supply of the town.

According to an early map discovered by Richard Thompson in the County Surveyor's office, and a USGS quad of 1901, the creek rose near Little Mountain, in the vicinity of the present Marshall Boulevard and Muscupiabe Drive, and ran a little east of southward diagonally through the old town to join Warm Creek at 3rd and Mt. View.

When San Bernardino was laid out in 1853, provision was made for diverting some of the flow into zanjas or ditches along the sides of many of the streets to carry water to the new homes and commercial structures then being built. Dams were also located

(See Page 35)