



MOUND CITY

By Arda M. Haenszel



Built in 1888 as the Mound City Hotel, this building became the Seventh Day Adventist medical training facility in 1905. It was demolished in 1967.

LOMA LINDA in its youth had many ups and downs. An extension of the Mission District two miles to the east, it was largely an agricultural area in the 1870's. At one time much of the area was owned by pioneer James A. Cole, who had come to Old San Bernardino in 1860 and, like the Frinks, devoted himself to fruit raising and freighting to Arizona. But a nucleus was forming at the foot of the hill, or mound, that called itself Mound City.

Among the status symbols of a budding community at that time were a post office, a railroad station, and, above all, a resort hotel. The San Bernardino Weekly Times reflected the feeling in this item on January 22, 1876:

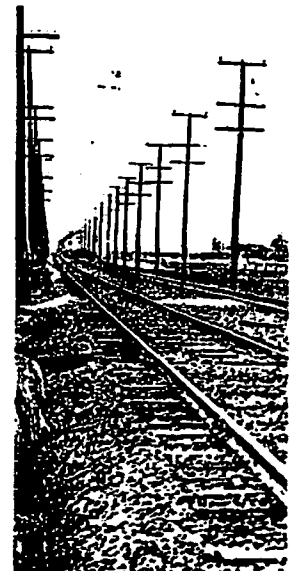
"The inhabitants of Mound City and vicinity are desirous of having a post office established in that burg. It would certainly be a convenience to the people of Old San Bernardino, as it would save them a long jaunt for their mail matter."

Only a few months later, on May 15, the Mound Station post office was actually established. Patronage must have been disappointing, however, for it was discontinued a year later. Street names on a plat of this ill-fated 1876 development interestingly reflect the influence of well-known pioneers such as Cole, Boren and Van Leuven.

By the 1880's, though Mound City had lost its post office, it had gained a railroad station on the main line of the Southern Pacific, which skirted the north foot of the hill. The station was a small one and apparently not very busy. The SAN BERNARDINO CITY AND COUNTY DIRECTORY of 1887 described the prospects of the community in discouraging terms:

"A small station on the Southern Pacific railroad, south of San Bernardino and east from Colton, received its name from the peculiar formation of the ground where it is located. A round knoll or mound here rises from the plain, comprising many acres of ground, and is prominent to view from all parts of the eastern end of the valley. Lively anticipation of this becoming a prominent town-site existed when the S.P. R.R. was first built, and a postoffice, store, etc., were located here. But these things have passed away and its proximity to Colton and San Bernardino preclude the probability of its ever being anything more than a possible way station. The entire mound passed into the hands of a private capitalist who improved it for a home, and it is now covered with a fine bearing orchard and vineyard. The entire property has recently been sold, passing into the hands of a syndicate of Riverside capitalists."

The capitalists, one of whom was Capt. Benjamin B. Handy, a San Bernardino County Supervisor and later a Riverside City Trustee, were eager to join in the current boom, and in 1888 they replaced



(See Page 5)